



2025

# LEGISLATIVE SCORECARD

---



---

This session, AFP-Missouri proudly worked with our legislative partners to cut taxes, expand education freedom for both K-12 kids and college students, protect youth entrepreneurs from government overreach, rein in the administrative state, and much more.

Thank you to our Prosperity Partners who worked tirelessly to fight for these issues to make Missouri the home of freedom and opportunity for all.

We look forward to continuing our push for liberty, and to returning money to Missouri families for many years to come.

In liberty,



Gary Hollis

A handwritten signature of Gary Hollis in black ink, written in a cursive style.

State Director, Americans for Prosperity – Missouri

## TABLE OF CONTENTS

SCORING METHODOLOGY + SYMBOL KEY	01
BILL DESCRIPTIONS	01
TOPLINE GRADES: SENATE	03
TOPLINE GRADES: HOUSE	04
SENATE VOTES	08
HOUSE VOTES	09



## SCORING METHODOLOGY

Absent = Noted but not included in the scoring calculations

Present/Abstain = 0

Vote With AFP Stance = +1

Vote Against AFP Stance = -1

Sponsor of HB664/SB350 = +2

Co-Sponsor of HB664/SB350 = +1

## SYMBOL KEY

A = Absent

P = Present

✓ = Vote With AFP Stance

✗ = Vote Against AFP Stance

++ = Sponsorship

+ = Co-Sponsorship

## BILL DESCRIPTIONS

### HB 12 | APPROPRIATIONS BILL

*AFP's Position: Support*

*Progress: Passed*

Budget Bill with \$50m MOScholars school choice funding allocation.

### HB 567 | MODIFIES PROVISIONS RELATING TO EMPLOYEE COMPENSATION

*AFP's Position: Support*

*Progress: Passed*

Repealed the mandated paid sick leave portion of Prop A.

### HB 594 | RELATING TO TAXATION

*AFP's Position: Support*

*Progress: Passed*

Eliminated the Capital Gains Tax.

### HB 664 | REQUIRES THE GENERAL ASSEMBLY TO APPROVE PROPOSED ADMINISTRATIVE RULES

*AFP's Position: Support*

*Progress: Passed in Committee*

Missouri REINS Act - Legislature must approve agency rules with a significant negative impact.

### HB 711 | ESTABLISHES TRANSFER PROCEDURES TO NONRESIDENT DISTRICTS FOR STUDENTS IN PUBLIC SCHOOLS

*AFP's Position: Support*

*Progress: Crossed Over*

Establishes "open enrollment" transfer procedures to nonresident districts for students in public schools.

### HB 798 | MODIFIES PROVISIONS RELATING TO TAXATION

*AFP's Position: Support*

*Progress: Crossed Over*

Sets the state personal income tax at a flat 4.7% with up to 10 additional 0.1 percent reductions. Increases the state standard deduction by \$4,000. Reduces the corporate tax rate from 4% to 3.75%.

### HB 903 | REDUCES THE ASSESSMENT PERCENTAGE OF TANGIBLE PERSONAL PROPERTY OVER A PERIOD OF YEARS

*AFP's Position: Support*

*Progress: Crossed Over*

Reduces the assessment percentage of personal property over a period of three years until it reaches 18% of its true monetary value.

### HB 1041 | MODIFIES INSPECTION AND GAUGING FEES IMPOSED ON BARRELS OF MALT LIQUOR

*AFP's Position: Support*

*Progress: Passed*

Reduces excise tax fees on American malt liquors and wine. (Broader application preferred, but a step in the right direction.)

### SB 63 | CREATES AND MODIFIES PROVISIONS RELATING TO THE PARTICIPATION OF CERTAIN STUDENTS IN NONTRADITIONAL EDUCATIONAL SETTINGS

*AFP's Position: Support*

*Progress: Passed*

Opens public school activities to homeschoolers; strengthens homeschool protections.

# BILL DESCRIPTIONS (CONT.)

## **SB 79 | MODIFIES PROVISIONS RELATING TO HEALTH CARE**

*AFP's Position: Support*  
*Progress: Passed*

Exempts Farm Bureau health plans from being regulated as insurance, ensuring Missouri families retain access to this affordable health benefits option.

## **SB 145 | MODIFIES PROVISIONS RELATING TO THE TAXATION OF CERTAIN BUSINESSES**

*AFP's Position: Support*  
*Progress: Passed*

Lemonade Stand Bill - Protects youth entrepreneurs from municipal regulation.

## **SB 160 | ESTABLISHES PROVISIONS RELATING TO EDUCATIONAL INSTITUTIONS**

*AFP's Position: Support*  
*Progress: Passed*

Freedom of Association protections for college campus groups.

## **SB 221 | MODIFIES THE STANDARD OF REVIEW FOR AGENCY INTERPRETATION OF STATUTES, RULES, REGULATIONS, AND SUBREGULATORY DOCUMENTS**

*AFP's Position: Support*  
*Progress: Passed*

Judicial Non-Deference (Chevron) - courts cannot defer decision-making authority to agencies.

## **SB 350 | REQUIRES THE GENERAL ASSEMBLY TO APPROVE PROPOSED ADMINISTRATIVE RULES WITH A FISCAL NOTE OVER \$250,000**

*AFP's Position: Support*  
*Progress: Passed in Committee*

Missouri REINS Act - Legislature must approve agency rules with a significant negative impact.



## TOPLINE GRADES: SENATE

Legislator	Party	District	Grade
Bean, Jason	R	M0025	100%
Beck, Doug	D	M0001	78%
Bernskoetter, Mike	R	M0006	100%
Black, Rusty	R	M0012	100%
Brattin, Rick	R	M0031	100%
Brown, Ben	R	M0026	88%
Brown, Justin	R	M0016	100%
Burger, Jamie	R	M0027	89%
Carter, Jill	R	M0032	90%
Cierpiot, Mike	R	M0008	100%
Coleman, Mary Elizabeth	R	M0022	89%
Crawford, Sandy	R	M0028	100%
Fitzwater, Travis	R	M0010	100%
Gregory, David	R	M0015	100%
Gregory, Kurtis	R	M0021	89%
Henderson, Mike	R	M0003	100%
Hough, Lincoln	R	M0030	86%
Hudson, Brad	R	M0033	100%
Lewis, Patty	D	M0007	40%
Luetkemeyer, Tony	R	M0034	100%

Legislator	Party	District	Grade
May, Karla	D	M0004	71%
McCreery, Tracy	D	M0024	56%
Moon, Mike	R	M0029	56%
Mosley, Angela	D	M0013	33%
Nicola, Joe	R	M0011	89%
Nurrenbern, Maggie	D	M0017	56%
O'Laughlin, Cindy	R	M0018	100%
Roberts, Steve	D	M0005	50%
Schnelting, Adam	R	M0023	100%
Schroer, Nick	R	M0002	100%
Trent, Curtis	R	M0020	100%
Washington, Barbara	D	M0009	38%
Webber, Stephen	D	M0019	67%
Williams, Brian	D	M0014	67%



## TOPLINE GRADES: HOUSE

Legislator	Party	District	Grade	Legislator	Party	District	Grade
Allen, Bill	R	M0017	100%	Butz, Steve	D	M0081	50%
Amato, Phil	R	M0113	92%	Byrnes, Tricia	R	M0063	100%
Anderson, Marlon	D	M0076	36%	Casteel, David	R	M0097	100%
Appelbaum, LaDonna	D	M0071	13%	Caton, Carolyn	R	M0033	100%
Aune, Ashley	D	M0014	29%	Chappell, Darin	R	M0137	92%
Baker, Ben	R	M0160	100%	Christ, Brad	R	M0096	100%
Banderman, Brad	R	M0119	77%	Christensen, Mazzie	R	M0002	79%
Barnes, Donna	D	M0028	33%	Clemens, Doug	D	M0072	39%
Billington, Hardy	R	M0152	92%	Coleman, Jeff	R	M0032	89%
Black, John	R	M0129	79%	Collins, Kimberly-Ann	D	M0077	50%
Boggs, Mitch	R	M0157	100%	Cook, Bennie	R	M0143	100%
Bosley, LaKeySha	D	M0079	25%	Costlow, Mike	R	M0108	100%
Boykin, Stephanie	D	M0070	29%	Crossley, Aaron	D	M0029	29%
Boyko, Mark	D	M0090	23%	Cupps, Scott	R	M0158	100%
Bromley, Bob	R	M0162	92%	Davidson, Bishop	R	M0130	100%
Brown, Chris	R	M0016	75%	Davis, Michael	R	M0056	85%
Brown, Donnie	R	M0149	78%	Dean, Jeremy	D	M0132	25%
Burton, Michael	D	M0092	39%	Deaton, Dirk	R	M0159	100%
Bush, Gregg	D	M0050	21%	Diehl, Dane	R	M0125	100%
Busick, Danny	R	M0003	75%	Dolan, David	R	M0148	92%



## TOPLINE GRADES: HOUSE (CONT.)

Legislator	Party	District	Grade
Doll, Jo	D	M0091	17%
Douglas, Melissa	D	M0027	29%
Durnell, Lisa	R	M0154	88%
Ealy, Anthony	D	M0036	50%
Elliott, Keith	R	M0153	67%
Falkner, Bill	R	M0010	80%
Farnan, Jeff	R	M0001	82%
Fogle, Betsy	D	M0135	29%
Fountain Henderson, Yolonda	D	M0085	21%
Fowler, Ron	R	M0031	100%
Fuchs, Elizabeth	D	M0080	17%
Gallick, Sherri	R	M0062	73%
Gragg, Jamie Ray	R	M0140	100%
Griffith, Dave	R	M0060	100%
Haden, Kent	R	M0043	100%
Hales, Jeff	D	M0086	22%
Haley, Willard	R	M0058	82%
Harbison, Tony	R	M0144	67%
Hardwick, Bill	R	M0121	100%
Hausman, Wendy	R	M0065	100%

Legislator	Party	District	Grade
Hein, Stephanie	D	M0136	29%
Hewkin, John	R	M0120	92%
Hinman, Dave	R	M0103	100%
Hovis, Barry	R	M0146	100%
Hruza, George	R	M0089	100%
Hurlbert, Josh	R	M0008	100%
Ingle, Keri	D	M0035	42%
Irwin, William	R	M0055	100%
Jacobs, Martin	D	M0038	33%
Jamison, Kenneth	D	M0015	38%
Jobe, Will	D	M0021	42%
Johnson, Michael	D	M0023	41%
Jones, Holly	R	M0088	100%
Jones, Mike	R	M0012	100%
Jordan, Steven	R	M0151	82%
Justus, Doyle	R	M0041	100%
Kalberloh, Jim	R	M0126	91%
Keathley, Ben	R	M0101	100%
Kelley, Ann	R	M0127	92%
Kimble, Nick	D	M0082	33%

## TOPLINE GRADES: HOUSE (CONT.)

Legislator	Party	District	Grade
Knight, Jeff	R	M0142	91%
Laubinger, Becky	R	M0117	89%
Lewis, Ed	R	M0006	100%
Loy, Cathy	R	M0163	100%
Lucas, Bill	R	M0115	100%
Mackey, Ian	D	M0099	40%
Mansur, Patricia	D	M0025	39%
Martin, John	R	M0044	92%
Matthiesen, Mark	R	M0107	90%
Mayhew, Don	R	M0124	100%
McGaugh, Peggy	R	M0007	82%
McGill, Mike	R	M0118	100%
Meirath, Mark	R	M0039	100%
Miller, Scott	R	M0069	100%
Mosley, Chanel	D	M0075	30%
Murphy, Jim	R	M0094	100%
Murray, Marty	D	M0078	25%
Myers, Jeff	R	M0042	100%
Nolte, Mark	R	M0051	75%
Oehlerking, Philip	R	M0100	100%

Legislator	Party	District	Grade
Overcast, Matthew	R	M0155	100%
Owen, Bill	R	M0131	100%
Parker, Cameron	R	M0150	75%
Patterson, Jon	R	M0030	100%
Perkins, Chad	R	M0040	100%
Peters, Tara	R	M0122	100%
Phelps, Brandon	R	M0054	100%
Plank, Adrian	D	M0047	35%
Pollitt, Brad	R	M0052	100%
Pouche, Sean	R	M0013	100%
Price, Tiffany	D	M0026	42%
Proudie, Raychel	D	M0073	42%
Reed, Raymond	D	M0083	21%
Reedy, Rodger	R	M0057	92%
Reuter, Renee	R	M0112	100%
Riggs, Louis	R	M0005	100%
Riley, Alex	R	M0134	100%
Roberts, Lane	R	M0161	92%
Rush, Tonya	D	M0067	64%
Sassmann, Bruce	R	M0061	67%

## TOPLINE GRADES: HOUSE (CONT.)

Legislator	Party	District	Grade	Legislator	Party	District	Grade
Schmidt, Melissa	R	M0141	100%	Thompson, Terry	R	M0053	64%
Schulte, Jim	R	M0049	100%	Titus, Bob	R	M0139	100%
Seitz, Brian	R	M0156	100%	Van Schoiack, Dean	R	M0009	73%
Self, Deanna	R	M0064	92%	Veit, Rudy	R	M0059	100%
Sharp, Mark	D	M0037	33%	Vernetti, Jeff	R	M0123	91%
Sharpe, Greg	R	M0004	82%	Violet, Terri	R	M0104	100%
Shields, Brenda	R	M0011	100%	Voss, John	R	M0147	100%
Simmons, John	R	M0109	100%	Waller, Ken	R	M0114	70%
Smith, David	D	M0046	42%	Walsh Moore, Bridget	D	M0093	21%
Smith, Kem	D	M0068	41%	Warwick, Christopher	R	M0128	100%
Smith, Marla	D	M0074	46%	Weber, Emily	D	M0024	21%
Sparks, Justin	R	M0110	100%	Wellenkamp, Colin	R	M0105	91%
Steinhoff, Kathy	D	M0045	21%	West, Richard	R	M0102	100%
Steinmetz, Connie	D	M0087	29%	Whaley, Burt	R	M0138	96%
Steinmeyer, Michael	R	M0020	100%	Williams, Cecelie	R	M0111	100%
Stinnett, Melanie	R	M0133	100%	Wilson, Travis	R	M0106	100%
Strickler, Kemp	D	M0034	25%	Wolfin, Bryant	R	M0145	58%
Taylor, Del	D	M0084	11%	Woods, Eric	D	M0018	21%
Taylor, Tim	R	M0048	100%	Wright, Dale	R	M0116	83%
Terry, Marlene	D	M0066	63%	Young, Yolanda	D	M0022	46%
Thomas, Nicholas	D	M0019	18%	Zimmermann, Jaclyn	D	M0098	17%

# SENATE VOTES

A = Absent

✓ = Vote With AFP Stance

++ = Sponsorship

P = Present

✗ = Vote Against AFP Stance

+ = Co-Sponsorship

Legislator	Party	District	HB1041	HB12	HB567	HB594	SB145	SB160	SB221	SB350	SB63	SB79
Bean, Jason	R	District 25	✓	A	✓	✓	✓	✓	✓	✓	✓	✓
Beck, Doug	D	District 01	✓	✗	✗	✓	✓	✓	✓		✓	✓
Bernskoetter, Mike	R	District 06	✓	✓	✓	✓	✓	✓	✓		✓	✓
Black, Rusty	R	District 12	✓	✓	✓	✓	✓	✓	✓		✓	✓
Brattin, Rick	R	District 31	✓	✓	✓	✓	✓	✓	✓		✓	✓
Brown, Ben	R	District 26	A	✗	✓	✓	✓	✓	✓	A	✓	✓
Brown, Justin	R	District 16	✓	✓	A	✓	✓	✓	A		✓	A
Burger, Jamie	R	District 27	✓	✓	✓	✓	✓	✓	✓		✗	✓
Carter, Jill	R	District 32	✓	✗	✓	✓	✓	✓	✓	✓	✓	✓
Cierpiot, Mike	R	District 08	✓	✓	✓	A	✓	✓	✓		✓	✓
Coleman, Mary Elizabeth	R	District 22	A	✓	✓	✓	✓	✓	✓	✓+	✓	✗
Crawford, Sandy	R	District 28	✓	✓	✓	✓	✓	✓	✓		✓	✓
Fitzwater, Travis	R	District 10	✓	✓	✓	✓	✓	✓	✓	++	✓	✓
Gregory, David	R	District 15	✓	✓	✓	✓	✓	✓	✓		✓	✓
Gregory, Kurtis	R	District 21	✓	✓	✓	✓	✓	✓	✓		✗	✓
Henderson, Mike	R	District 03	✓	✓	✓	✓	✓	✓	✓		✓	✓
Hough, Lincoln	R	District 30	✓	✓	✗	✓	A	✓	✓		A	✓
Hudson, Brad	R	District 33	✓	✓	✓	✓	✓	✓	✓	✓	✓	✓
Lewis, Patty	D	District 07	✓	✗	✗	✗	✓	✓	✗	✗	✓	✗
Luetkemeyer, Tony	R	District 34	✓	✓	✓	✓	✓	✓	✓		✓	✓
May, Karla	D	District 04	A	✗	✗	✓	✓	✓	✓		✓	A
McCreery, Tracy	D	District 24	✓	✗	✗	✓	✓	✓	✗		✓	✗
Moon, Mike	R	District 29	✓	✗	✓	✗	✓	✗	✓		✓	✗
Mosley, Angela	D	District 13	✓	✗	✗	✗	✓	✓	✗		✗	✗
Nicola, Joe	R	District 11	✓	✗	✓	✓	✓	✓	✓		✓	✓
Nurrenbern, Maggie	D	District 17	✓	✗	✗	✗	✓	✓	✗		✓	✓
O'Laughlin, Cindy	R	District 18	✓	✓	✓	✓	✓	A	✓		✓	✓
Roberts, Steve	D	District 05	✓	✗	✗	✗	✓	✓	✗		✓	A
Schnelting, Adam	R	District 23	✓	✓	✓	✓	✓	✓	✓		✓	✓
Schroer, Nick	R	District 02	✓	✓	✓	✓	✓	✓	✓		✓	A
Trent, Curtis	R	District 20	✓	✓	✓	✓	✓	✓	✓		✓	✓
Washington, Barbara	D	District 09	✗	✗	✗	✗	✓	✓	A		✓	✗
Webber, Stephen	D	District 19	✓	✗	✗	✓	✓	✓	✗		✓	✓
Williams, Brian	D	District 14	✓	✗	✗	✓	✓	✓	✗	A	✓	✓





# HOUSE VOTES

A = Absent

✓ = Vote With AFP Stance

++ = Sponsorship

P = Present

✗ = Vote Against AFP Stance

+ = Co-Sponsorship

Legislator	Party	District	HB1041	HB12	HB567	HB594	HB664	HB711	HB798	HB903	SB145	SB160	SB221	SB63	SB79
Allen, Bill	R	District 017	✓	✓	A	✓		✓	✓	✓	✓	✓	✓	✓	✓
Amato, Phil	R	District 113	✓	✓	✗	✓		✓	✓	✓	✓	✓	✓	✓	✓
Anderson, Marlon	D	District 076	✓	✗	✗	✗		✗	✗	✗	A	P	✓	P	✓
Appelbaum, LaDonna	D	District 071	A	✗	A	✗		A	A	A	A	P	A	✗	A
Aune, Ashley	D	District 014	✓	✗	✗	✗		✗	✗	✗	✗	P	✓	✗	✓
Baker, Ben	R	District 160			✓		+	✓	✓	✓					
Banderman, Brad	R	District 119	A	✗	✓	✓		✗	✓	P	✓	✓	✓	✓	✓
Barnes, Donna	D	District 028	✓	✗	✗	✗		✗	✗	✗	✓	✓	✗	✗	✓
Billington, Hardy	R	District 152	✗	✓	✓	✓		✓	✓	✓	✓	✓	✓	✓	✓
Black, John	R	District 129	✓	P	✓	✓		✓	✓	✗	✓	✓	✓	✗	✓
Boggs, Mitch	R	District 157	A	✓	✓	✓	+	✓	✓	✓	✓	✓	✓	✓	✓
Bosley, LaKeySha	D	District 079	✓	✗	✗	A		✗	✗	✗	A	✓	A	✗	A
Boykin, Stephanie	D	District 070	✓	✗	✗	✗		✗	✗	✗	P	P	P	✗	✓
Boyko, Mark	D	District 090	✓	✗	✗	✗		✗	✗	✗	A	P	✗	✗	✓
Bromley, Bob	R	District 162	✓	✓	✓	✓		✗	✓	✓	✓	✓	✓	✓	✓
Brown, Chris	R	District 016	A	A	✗	✓		✗	✓	✓	A	✓	✓	A	✓
Brown, Donnie	R	District 149	A	A	✓	✓		✗	✓	✗	✓	✓	✓	A	✓
Burton, Michael	D	District 092	✓	✗	✗	P		✗	✗	✗	P	P	P	✗	✓
Bush, Gregg	D	District 050	✓	✗	✗	✗		✗	✗	✗	✗	✗	P	✗	✓
Busick, Danny	R	District 003	✓	✗	A	✓		A	A	A	✓	✓	✓	✗	✓
Butz, Steve	D	District 081	✓	✗	✗	P		✗	✗	✗	✓	✓	A	✓	✓
Byrnes, Tricia	R	District 063	✓	✓	A	✓		✓	✓	✓	✓	✓	✓	✓	✓
Casteel, David	R	District 097	✓	✓	✓	A	+	✓	✓	✓	✓	✓	✓	A	✓
Caton, Carolyn	R	District 033	✓	✓	✓	✓		✓	A	✓	✓	✓	✓	✓	✓
Chappell, Darin	R	District 137	✓	✓	✓	✓	+	✓	✗	✓	✓	✓	✓	✓	✓
Christ, Brad	R	District 096	✓	✓	✓	✓		✓	✓	✓	✓	✓	✓	✓	✓
Christensen, Mazzie	R	District 002	✗	P	✓	✓		✓	✓	✓	✓	✓	✓	✓	✗
Clemens, Doug	D	District 072	✓	✗	A	✗		✗	✗	A	A	P	✗	✓	✓
Coleman, Jeff	R	District 032	✓	✓	✓	✓		✓	✗	✓	A	✓	A	✓	A
Collins, Kimberly-Ann	D	District 077	✓	✗	✗	✗		✗	✗	✗	✓	✓	✓	✓	✓
Cook, Bennie	R	District 143	✓	✓	✓	✓	+	✓	✓	✓	✓	✓	✓	✓	✓
Costlow, Mike	R	District 108	✓	✓	✓	✓	+	✓	✓	✓	✓	✓	✓	✓	✓
Crossley, Aaron	D	District 029	✓	✗	✗	P		✗	✗	✗	P	P	✗	✗	✓
Cupps, Scott	R	District 158	✓	✓	✓	A		✓	✓	✓	✓	✓	✓	✓	✓
Davidson, Bishop	R	District 130	✓	✓	✓	✓	+	✓	✓	✓	✓	✓	✓	✓	✓
Davis, Michael	R	District 056	✗	✗	✓	✓	+	✓	✓	✓	✓	✓	✓	✓	✓
Dean, Jeremy	D	District 132	✓	A	✗	✗		✗	✗	✗	✗	P	✗	✓	A
Deaton, Dirk	R	District 159	✓	✓	✓	✓		✓	A	✓	✓	✓	✓	✓	✓
Diehl, Dane	R	District 125	✓	✓	✓	✓		✓	✓	✓	✓	✓	✓	✓	✓
Dolan, David	R	District 148	✓	✓	✓	✓		✗	✓	✓	✓	✓	✓	✓	✓



# HOUSE VOTES (CONT.)

A = Absent

✓ = Vote With AFP Stance

++ = Sponsorship

P = Present

✗ = Vote Against AFP Stance

+ = Co-Sponsorship

Legislator	Party	District	HB1041	HB12	HB567	HB594	HB664	HB711	HB798	HB903	SB145	SB160	SB221	SB63	SB79
Doll, Jo	D	District 091	A	A	X	X		X	X	X	X	P	X	A	✓
Douglas, Melissa	D	District 027	P	X	X	X		X	X	X	X	✓	✓	X	✓
Durnell, Lisa	R	District 154	X	✓	✓	✓		✓	✓	✓	✓	P	✓	✓	✓
Ealy, Anthony	D	District 036	✓	X	X	P		X	X	X	✓	✓	✓	✓	A
Elliott, Keith	R	District 153	X	✓	✓	✓		X	✓	X	✓	X	✓	✓	✓
Falkner, Bill	R	District 010	✓	✓	✓	✓		X	✓	X	A	✓	✓	A	✓
Farnan, Jeff	R	District 001	A	✓	✓	✓	+	X	✓	✓	✓	✓	✓	X	✓
Fogle, Betsy	D	District 135	✓	X	X	P		X	X	X	P	P	X	X	✓
Fountain Henderson, Yolonda	D	District 085	✓	X	X	X		X	X	X	X	P	X	X	✓
Fowler, Ron	R	District 031	✓	✓	✓	✓		✓	✓	✓	✓	✓	✓	✓	✓
Fuchs, Elizabeth	D	District 080	✓	X	X	X		X	X	X	X	X	X	X	✓
Gallick, Sherri	R	District 062	✓	P	✓	✓		X	✓	X	✓	A	✓	P	✓
Gragg, Jamie Ray	R	District 140	✓	✓	✓	✓	+	✓	A	✓	✓	A	✓	✓	✓
Griffith, Dave	R	District 060	✓	✓	✓	✓		✓	✓	✓	✓	✓	✓	✓	✓
Haden, Kent	R	District 043	✓	✓	A	✓		✓	✓	A	✓	✓	✓	✓	✓
Hales, Jeff	D	District 086	✓	A	X	X		X	X	X	X	A	X	A	✓
Haley, Willard	R	District 058	✓	✓	✓	✓		X	✓	X	✓	✓	✓	A	✓
Harbison, Tony	R	District 144	✓	X	✓	✓		X	✓	X	✓	✓	✓	X	✓
Hardwick, Bill	R	District 121	A	✓	✓	✓		✓	✓	✓	✓	✓	✓	✓	✓
Hausman, Wendy	R	District 065	✓	✓	✓	✓		✓	✓	✓	✓	✓	✓	✓	✓
Hein, Stephanie	D	District 136	✓	X	X	P		X	X	X	P	P	X	X	✓
Hewkin, John	R	District 120	✓	✓	✓	✓		✓	✓	X	✓	✓	✓	✓	✓
Hinman, Dave	R	District 103	✓	✓	✓	✓		✓	✓	✓	✓	✓	✓	✓	✓
Hovis, Barry	R	District 146	✓	✓	✓	✓		✓	✓	✓	✓	✓	✓	✓	✓
Hruza, George	R	District 089	✓	✓	✓	✓	+	✓	✓	✓	✓	✓	✓	✓	✓
Hurlbert, Josh	R	District 008	✓	A	✓	✓	+	✓	✓	✓	✓	✓	✓	✓	✓
Ingle, Keri	D	District 035	✓	X	X	X		X	X	X	✓	X	✓	✓	✓
Irwin, William	R	District 055	✓	✓	✓	✓	+	✓	✓	✓	✓	✓	✓	✓	✓
Jacobs, Martin	D	District 038	✓	X	X	X		X	X	X	X	✓	✓	X	✓
Jamison, Kenneth	D	District 015	✓	X	X	X		X	X	X	✓	P	✓	X	✓
Jobe, Will	D	District 021	✓	P	X	P		X	X	X	P	P	X	✓	✓
Johnson, Michael	D	District 023	✓	X	X	X		X	X	A	P	✓	P	P	✓
Jones, Holly	R	District 088	✓	✓	✓	✓		✓	✓	✓	✓	✓	✓	✓	✓
Jones, Mike	R	District 012	✓	✓	A	✓	+	✓	✓	✓	✓	✓	✓	✓	✓
Jordan, Steven	R	District 151	A	A	✓	✓		X	✓	✓	✓	X	✓	✓	✓
Justus, Doyle	R	District 041	✓	✓	✓	✓		A	A	✓	✓	✓	✓	✓	✓
Kalberloh, Jim	R	District 126	✓	✓	A	✓		✓	✓	X	✓	✓	✓	✓	✓
Keathley, Ben	R	District 101	A	A	✓	A	++	✓	✓	✓	✓	✓	✓	A	✓
Kelley, Ann	R	District 127	✓	✓	✓	✓		X	✓	✓	✓	✓	✓	✓	✓
Kimble, Nick	D	District 082	✓	X	X	P		X	X	X	P	P	P	X	✓





# HOUSE VOTES (CONT.)

A = Absent

✓ = Vote With AFP Stance

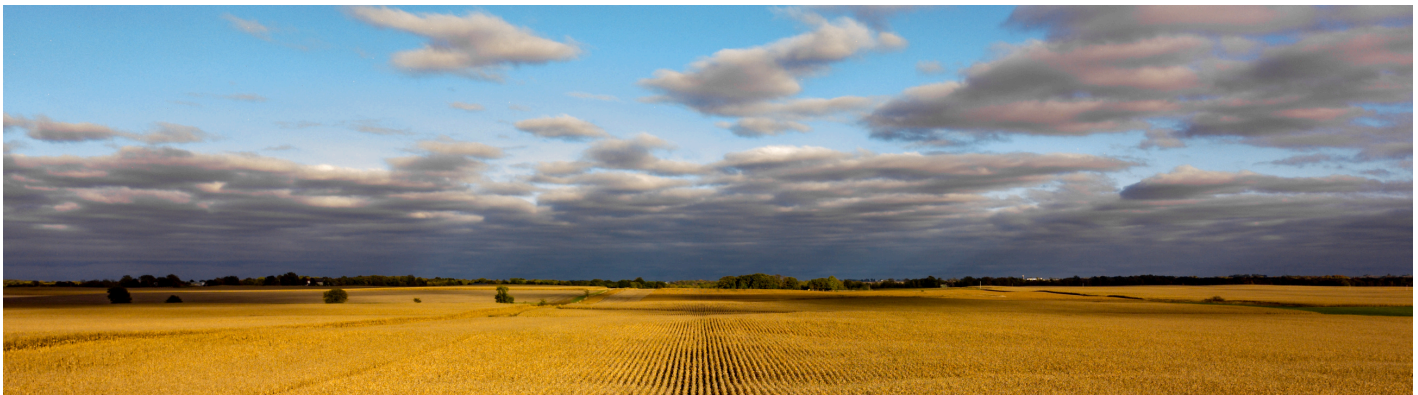
++ = Sponsorship

P = Present

✗ = Vote Against AFP Stance

+ = Co-Sponsorship

Legislator	Party	District	HB1041	HB12	HB567	HB594	HB664	HB711	HB798	HB903	SB145	SB160	SB221	SB63	SB79
Knight, Jeff	R	District 142	✓	✓	✓	✓		✓	✓	✓	A	✓	✓	✗	✓
Laubinger, Becky	R	District 117	✗	✓	✓	✓		✓	✓	✓	A	✓	A	✓	A
Lewis, Ed	R	District 006	A	A	✓	✓		✓	✓	✓	✓	✓	✓	✓	✓
Loy, Cathy	R	District 163	✓	✓	✓	✓	+	✓	✓	✓	✓	✓	✓	✓	✓
Lucas, Bill	R	District 115	A	A	✓	✓		✓	✓	✓	✓	✓	✓	A	✓
Mackey, Ian	D	District 099	A	A	✗	✗		✓	✗	✗	✓	✗	✓	✗	✓
Mansur, Patricia	D	District 025	✓	✗	✗	✗		✗	✗	✗	P	✓	P	✗	✓
Martin, John	R	District 044	✗	✓	✓	✓	+	✓	✓	✓	✓	✓	✓	✓	✓
Matthiesen, Mark	R	District 107	✓	✗	A	A	+	✓	✓	✓	✓	✓	✓	✓	✓
Mayhew, Don	R	District 124	✓	✓	✓	✓		✓	✓	✓	✓	✓	✓	A	✓
McGaugh, Peggy	R	District 007	✓	✓	✓	✓		✗	✓	✗	✓	✓	✓	A	✓
McGill, Mike	R	District 118	A	✓	✓	✓		✓	✓	✓	✓	✓	✓	✓	✓
Meirath, Mark	R	District 039	A	A	✓	✓	+	✓	✓	✓	✓	✓	✓	A	✓
Miller, Scott	R	District 069	✓	✓	✓	✓		✓	✓	✓	✓	✓	✓	✓	✓
Mosley, Chanel	D	District 075	A	✗	✗	✗		✗	✗	✗	✗	A	✓	✓	✓
Murphy, Jim	R	District 094	✓	✓	✓	✓		✓	✓	✓	✓	✓	✓	✓	✓
Murray, Marty	D	District 078	✓	✗	✗	✗		✗	✗	✗	P	P	✗	✗	✓
Myers, Jeff	R	District 042	✓	✓	✓	✓		✓	✓	✓	✓	✓	✓	✓	✓
Nolte, Mark	R	District 051	✓	✗	✓	✓		✓	✓	✗	✓	✓	✓	✗	✓
Oehlerking, Philip	R	District 100	✓	✓	A	✓	+	✓	✓	A	✓	✓	✓	✓	✓
Overcast, Matthew	R	District 155	✓	✓	✓	✓	+	✓	✓	A	✓	✓	✓	A	✓
Owen, Bill	R	District 131	A	✓	A	✓		✓	✓	A	✓	✓	✓	✓	✓
Parker, Cameron	R	District 150	✓	✓	✓	✓		✗	✓	✗	✓	✓	✓	✗	✓
Patterson, Jon	R	District 030	✓	✓	✓	✓		✓	✓	✓	✓	✓	✓	✓	✓
Perkins, Chad	R	District 040	✓	✓	✓	✓	+	✓	✓	✓	✓	✓	✓	✓	✓
Peters, Tara	R	District 122	A	A	✓	A		✓	✓	✓	✓	✓	✓	A	✓
Phelps, Brandon	R	District 054	✓	✓	✓	✓		✓	✓	✓	✓	✓	✓	✓	✓
Plank, Adrian	D	District 047	✓	✗	✗	✗		✗	✗	A	✗	P	✓	A	✓
Pollitt, Brad	R	District 052	✓	✓	✓	✓		✓	✓	✓	✓	✓	✓	✓	✓
Pouche, Sean	R	District 013	✓	✓	A	✓	+	✓	✓	✓	✓	✓	✓	✓	✓
Price, Tiffany	D	District 026	✓	✗	✗	✗		✓	✗	✗	✗	✓	✓	✗	✓
Proudie, Raychel	D	District 073	✓	✗	✗	✗		✗	✗	✗	✓	✓	✗	✓	✓
Reed, Raymond	D	District 083	✓	✗	✗	✗		✗	✗	✗	A	✗	✗	✗	✓
Reedy, Rodger	R	District 057	✓	✓	✓	✓		✓	✓	✗	✓	✓	✓	✓	✓
Reuter, Renee	R	District 112	✓	✓	✓	✓		✓	✓	✓	✓	✓	✓	✓	✓
Riggs, Louis	R	District 005	A	✓	✓	✓		✓	✓	✓	✓	A	✓	✓	✓
Riley, Alex	R	District 134	✓	✓	✓	✓	+	✓	✓	✓	✓	✓	✓	✓	✓
Roberts, Lane	R	District 161	✓	✓	✓	✓		✗	✓	✓	✓	✓	✓	✓	✓
Rush, Tonya	D	District 067	A	✗	A	✗		A	A	A	P	✓	✓	✓	✓
Sassmann, Bruce	R	District 061	✓	✗	✓	✓		✗	✓	✗	✓	✓	✓	✗	✓



# HOUSE VOTES (CONT.)

A = Absent

✓ = Vote With AFP Stance

++ = Sponsorship

P = Present

✗ = Vote Against AFP Stance

+ = Co-Sponsorship

Legislator	Party	District	HB1041	HB12	HB567	HB594	HB664	HB711	HB798	HB903	SB145	SB160	SB221	SB63	SB79
Schmidt, Melissa	R	District 141	A	✓	✓	✓		✓	✓	✓	✓	✓	✓	✓	✓
Schulte, Jim	R	District 049	✓	✓	✓	✓	+	✓	✓	✓	✓	✓	✓	✓	✓
Seitz, Brian	R	District 156	✓	✓	✓	✓	+	✓	✓	✓	✓	✓	✓	✓	✓
Self, Deanna	R	District 064	✗	✓	✓	✓		✓	✓	✓	✓	✓	✓	✓	✓
Sharp, Mark	D	District 037	✓	✗	✗	P		✗	✗	✗	✗	P	✓	✗	✓
Sharpe, Greg	R	District 004	✓	✓	✓	✓		✗	✓	✗	✓	✓	✓	A	✓
Shields, Brenda	R	District 011	✓	✓	✓	✓		✓	✓	A	A	✓	✓	✓	✓
Simmons, John	R	District 109	✓	✓	✓	✓	+	✓	✓	✓	✓	✓	✓	✓	✓
Smith, David	D	District 046	✓	✗	✗	✗		✗	✗	P	✗	P	✓	✓	✓
Smith, Kem	D	District 068	A	✗	✗	✗		✗	✗	✗	✓	✓	P	✓	✓
Smith, Marla	D	District 074	✓	✗	A	✗		✗	✗	A	P	✓	P	✗	✓
Sparks, Justin	R	District 110	A	A	✓	✓	+	✓	✓	✓	A	✓	A	A	A
Steinhoff, Kathy	D	District 045	✓	✗	✗	✗		✗	✗	✗	✗	✗	P	✗	✓
Steinmetz, Connie	D	District 087	✓	✗	✗	✗		✗	✗	✗	P	P	P	✗	✓
Steinmeyer, Michael	R	District 020	✓	✓	✓	✓		✓	✓	✓	✓	✓	✓	✓	✓
Stinnett, Melanie	R	District 133	✓	✓	✓	✓	+	✓	✓	✓	✓	✓	✓	✓	✓
Strickler, Kemp	D	District 034	✓	✗	✗	P		✗	✗	✗	✗	P	✗	✗	✓
Taylor, Del	D	District 084	✓	✗	✗	✗		✗	✗	✗	A	✗	A	✗	A
Taylor, Tim	R	District 048	✓	✓	✓	✓		✓	✓	✓	✓	✓	✓	✓	✓
Terry, Marlene	D	District 066	✓	✓	✗	✗		✓	✗	✗	✓	✓	P	✓	✓
Thomas, Nicholas	D	District 019	✓	✗	✗	✗		✗	✗	✗	✗	✓	✗	✗	A
Thompson, Terry	R	District 053	✓	✗	✓	A		✗	✓	✗	✓	✓	✓	✗	✓
Titus, Bob	R	District 139	A	A	✓	✓	+	✓	✓	✓	✓	A	A	A	✓
Van Schoiack, Dean	R	District 009	✓	✓	✓	✓		✗	✓	✗	A	✓	✓	✗	✓
Veit, Rudy	R	District 059	✓	✓	A	✓		A	A	A	✓	✓	✓	✓	✓
Verneti, Jeff	R	District 123	✓	✓	✓	✓	+	✗	A	✓	✓	✓	✓	✓	✓
Violet, Terri	R	District 104	✓	✓	✓	✓		✓	✓	✓	✓	✓	✓	✓	✓
Voss, John	R	District 147	✓	✓	✓	✓		✓	✓	✓	✓	✓	✓	✓	✓
Waller, Ken	R	District 114	A	A	✓	✓		✗	✓	✗	✓	✓	✓	✗	✓
Walsh Moore, Bridget	D	District 093	✓	✗	✗	✗		✗	✗	✗	✗	P	✗	✗	✓
Warwick, Christopher	R	District 128	✓	✓	✓	✓		✓	✓	✓	✓	✓	✓	✓	✓
Weber, Emily	D	District 024	✓	✗	✗	✗		✗	✗	✗	✗	P	✗	✗	✓
Wellenkamp, Colin	R	District 105	✓	✓	✗	✓		✓	✓	✓	A	✓	✓	✓	✓
West, Richard	R	District 102	A	A	✓	✓	+	✓	✓	✓	✓	✓	✓	A	✓
Whaley, Burt	R	District 138	✓	✓	✓	✓		✓	✓	✓	✓	✓	✓	✓	P
Williams, Cecelie	R	District 111	✓	✓	✓	✓		✓	✓	✓	✓	✓	✓	✓	A
Wilson, Travis	R	District 106	A	✓	✓	✓	+	✓	✓	✓	✓	✓	✓	✓	✓
Wolfin, Bryant	R	District 145	✗	✗	✓	A	+	✓	✗	✓	✗	✗	✓	✓	✓
Woods, Eric	D	District 018	✓	✗	✗	✗		✗	✗	✗	✗	P	✗	✗	✓
Wright, Dale	R	District 116	A	A	✓	✓		✓	✓	✓	A	✗	A	A	A
Young, Yolanda	D	District 022	✓	✗	✗	✗		✗	✗	✗	P	✓	✓	✓	✓
Zimmermann, Jaclyn	D	District 098	✓	✗	✗	✗		✗	✗	✗	A	P	A	✗	A







 [\\_@afpmissouri](#)

 [@AFPMissouri](#)

 [Facebook.com/MissouriAFP](https://Facebook.com/MissouriAFP)

 [AFPMissouri.com](https://AFPMissouri.com)

© 2025 Americans for Prosperity. All Rights Reserved.