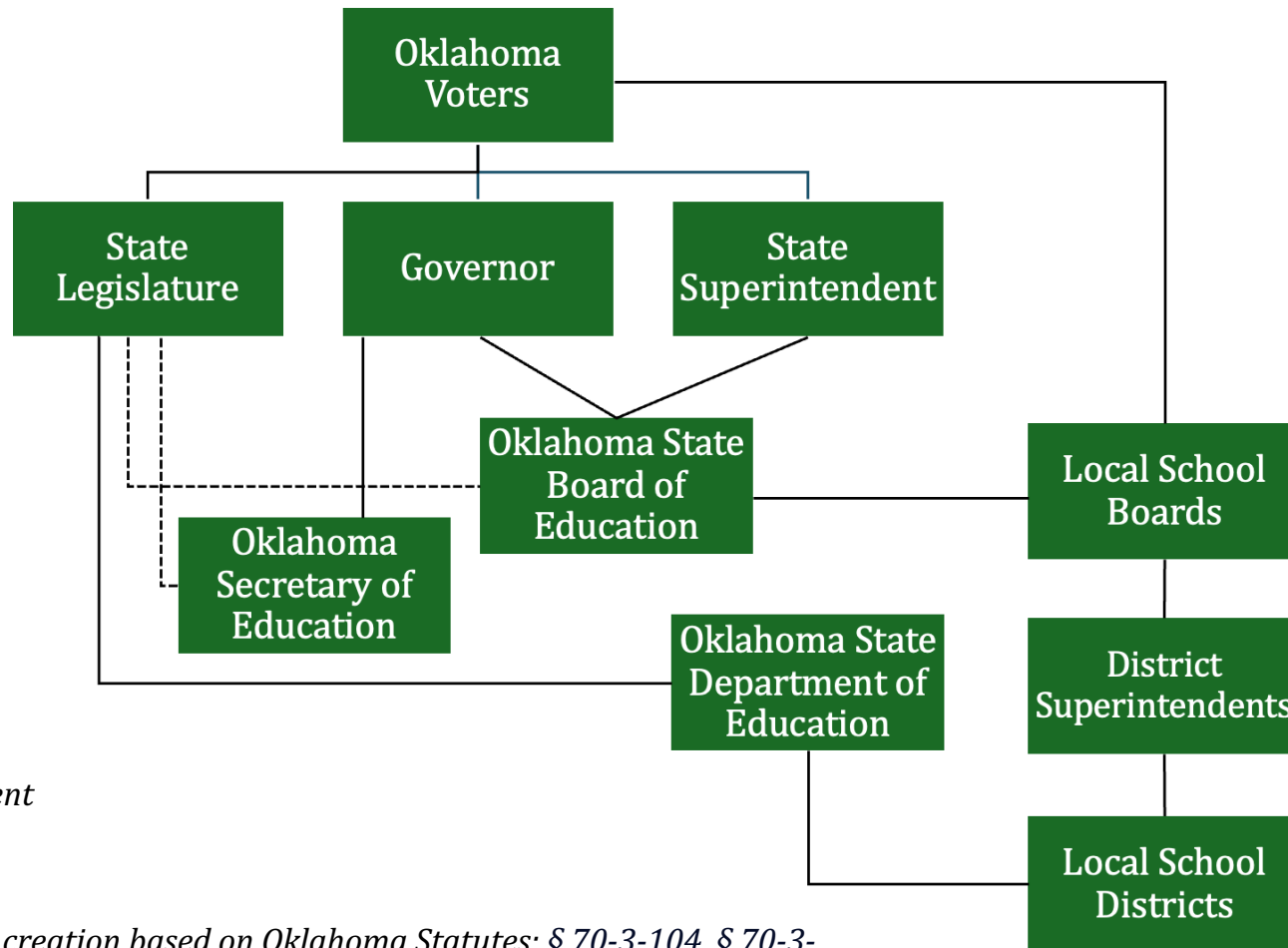


# ALIGNING SCHOOL BOARD ELECTIONS WITH ON-CYCLE ELECTIONS

Interim Study 24-018

Bradley Ward, Ph.D.  
Doctor of Education Policy  
[bward@afphq.org](mailto:bward@afphq.org)

# OKLAHOMA PUBLIC EDUCATION GOVERNANCE SYSTEM



----- Reflects appointment confirmation

Source: Bradley Ward, Ph.D. creation based on Oklahoma Statutes: § 70-3-104, § 70-3-107.1, § 70-3-188, § 70-3-117 and Fourth Amended Executive Order 2019-01

# THE IMPORTANCE OF SCHOOL BOARDS



Oklahoma has approximately  
2,500 locally elected school  
board members.



Responsible for  
hiring and  
evaluating district  
superintendent



\$12.3 Billion Total  
Available Revenue in FY23



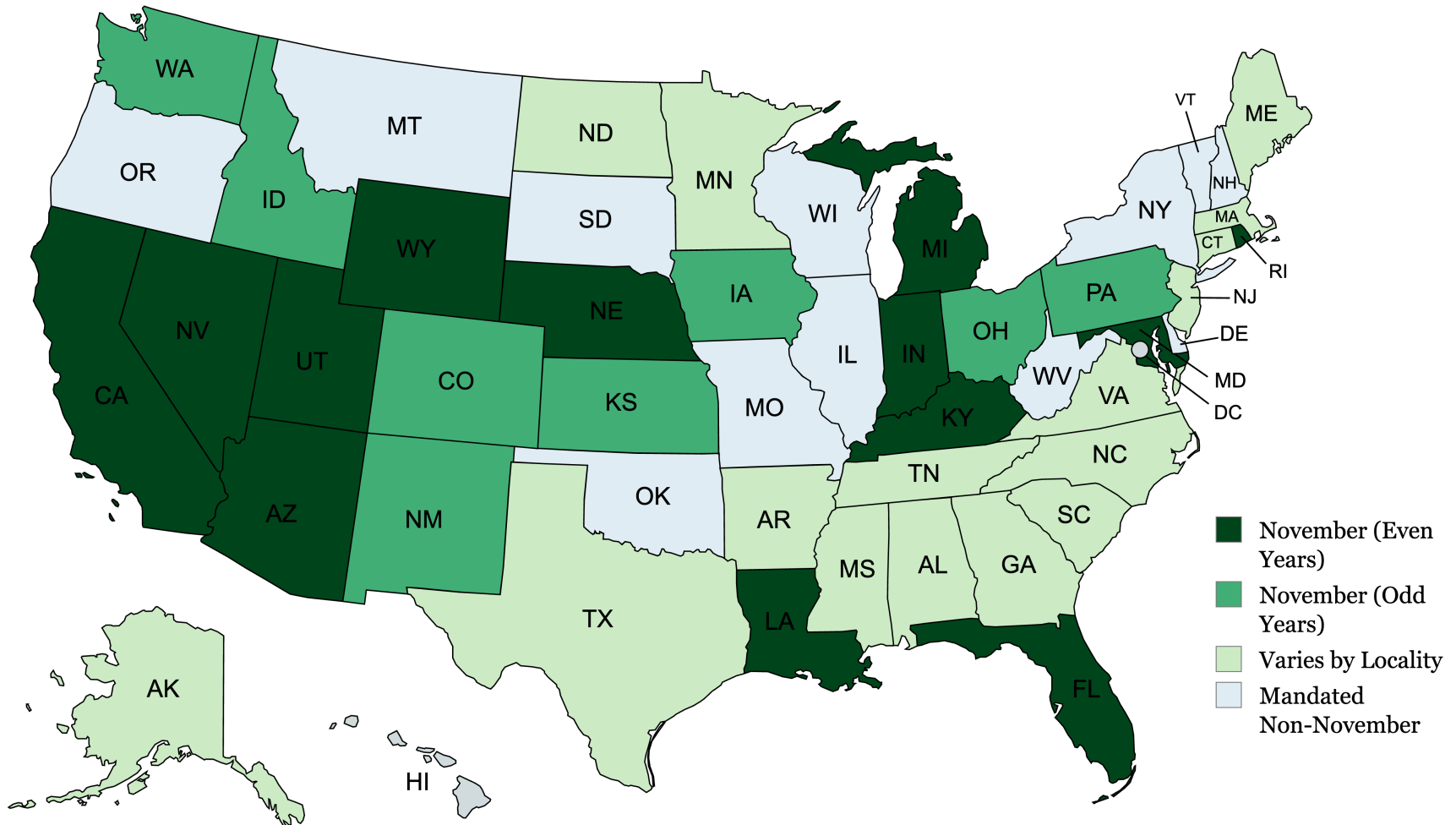
Responsible for  
approving the  
curriculum and  
instruction  
materials



700,000 students

*Source: Bradley Ward, Ph.D. based on data from statutory research and OCAS*

# TIMING OF STATES' SCHOOL BOARD ELECTIONS



\*Note: The Hawaii Board of Education oversees all public schools in the state with members appointed by the governor. The state does not hold school board elections.

# PERCENT OF REGISTERED VOTERS VOTING IN OKLAHOMA LOCAL SCHOOL BOARD ELECTIONS (APRIL 2, 2024)

*Source: Bradley Ward, Ph.D.'s analysis based on data from Oklahoma State Election Board*

100%

90%

80%

70%

60%

50%

40%

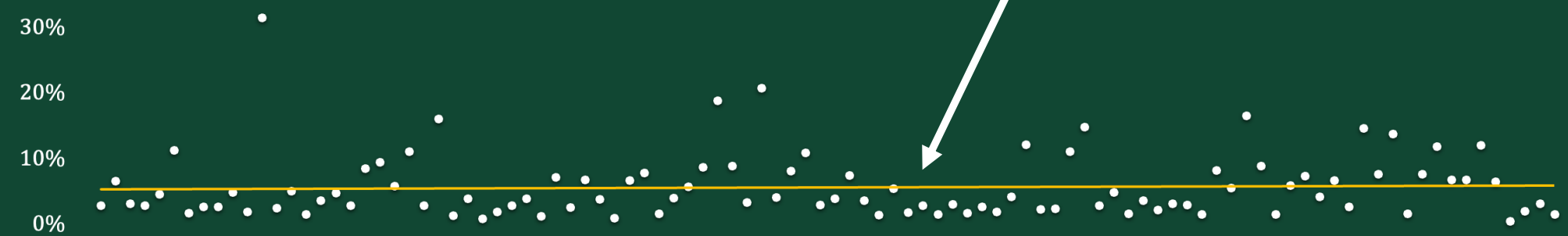
30%

20%

10%

0%

Average 6% Voter Turnout

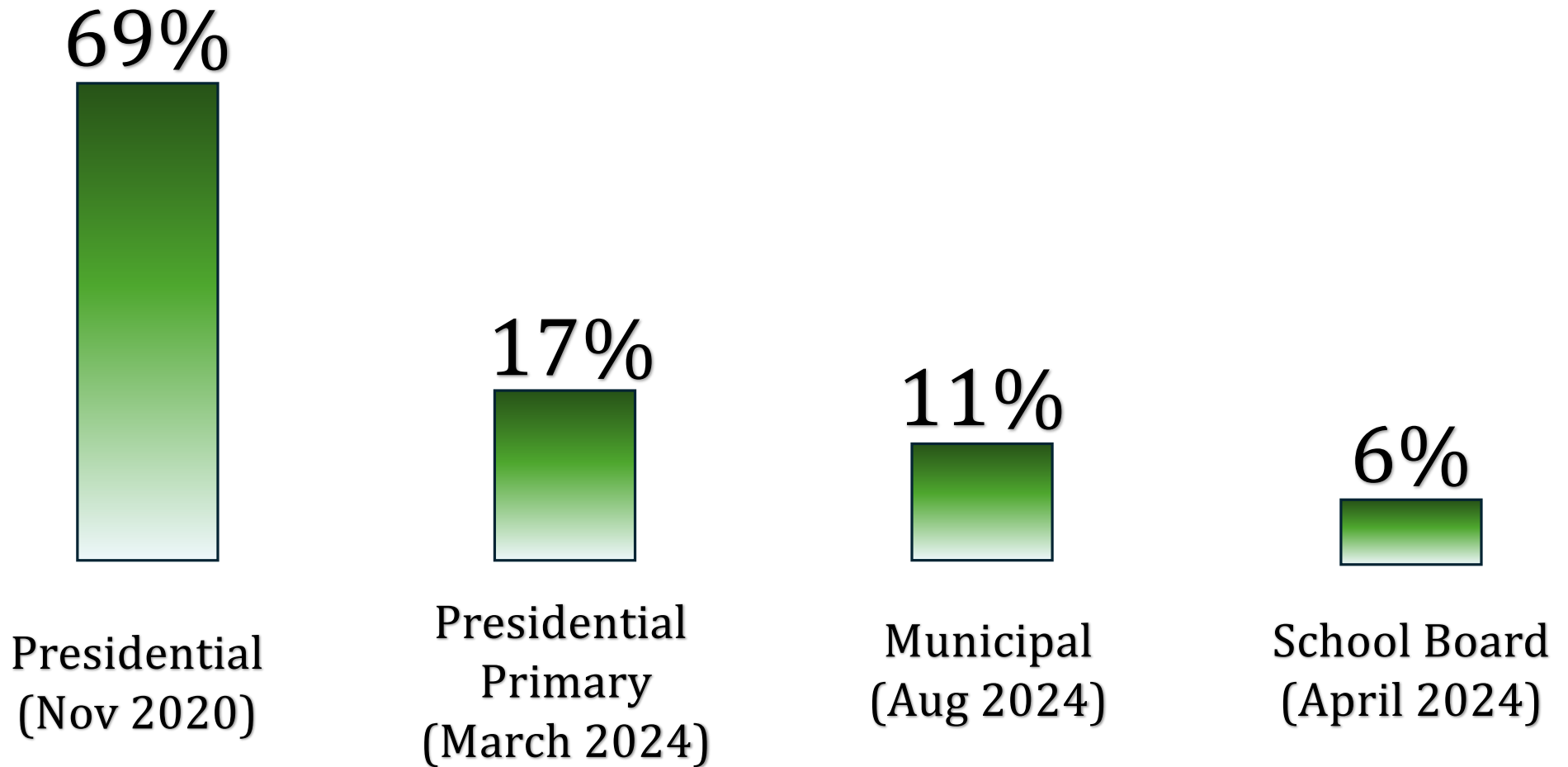


# OKLAHOMA SCHOOL BOARD ELECTIONS VOTER TURNOUT APRIL 2, 2024

School District	Total Votes	Total Registered Voters	% of Voters Voting in School Board Election	Average Daily Attendance	School Expenditures
Broken Bow Office No. 4	36	4,614	1%	1,511	\$17,639,484
Mason Office No. 4	41	1,571	3%	255	\$3,081,161
Midwest City-Del City Office No. 4	681	16,679	4%	11,344	\$129,877,987
Norman Office No. 4	2,753	18,669	15%	14,720	\$162,002,661
Oklahoma City Office No. 3	350	22,528	2%	33,245	\$445,854,492
Owasso Office No. 4	1,174	40,671	3%	9,802	\$92,582,356
Stillwater Office No. 4	4,968	34,138	15%	5,653	\$68,322,275
Union Office No. 4	146	9,653	2%	13,764	\$169,830,038
Wellston Office No. 4	278	4,307	6%	514	\$5,678,964
Western Heights Office No. 4	67	16,691	0%	2,858	\$39,860,606

Source: Bradley Ward, Ph.D. analysis based on data from Oklahoma State Election Board and Oklahoma Cost Accounting System

# OKLAHOMA VOTER TURNOUT



*Source: Bradley Ward, Ph.D.'s analysis based on data from the Oklahoma State Election Board*

# COST OF OKLAHOMA SCHOOL BOARD ELECTIONS (2023)

Function Code	Function Description	Object Code	Object Description	Total Expense
2314	Election Services	310	OFCL/ADM SVCS	\$6,859,973.99
2314	Election Services	331	Accounting Services	\$22,399.50
2314	Election Services	333	Collect Barg Svcs	\$31,335.23
2314	Election Services	337	OTHER PROFESSIONAL SERVICES	\$257,531.91
2314	Election Services	342	Data Proc Svcs	\$3,404.00
2314	Election Services	343	Game Offcls Svcs	\$813.00
2314	Election Services	366	Management Services (310s)	\$48,872.89
2314	Election Services	420	Cleaning and Laundry Services	\$71.04
2314	Election Services	431	Nontechnology Serv	\$2,062.58
2314	Election Services	434	Electrical Services	\$1,548.93
2314	Election Services	530	Communication Services	\$6,876.09
2314	Election Services	540	Advertising	\$55,951.56
2314	Election Services	550	Printing and Binding	\$5,609.76
2314	Election Services	580	Staff Travel	\$314.28
2314	Election Services	611	Copy supplies	\$501.70
2314	Election Services	682	Awards Gifts Decorations Regalia and Refreshments	\$2,500.00
2314	Election Services	810	Dues and Fees	\$9,589,174.37
2314	Election Services	890	Refund of Prior Year's Revenue	\$974.05
Total Expenditures for Elections				\$16,889,914.88

Source: Bradley Ward, Ph.D. analysis based on data from the Oklahoma Cost Accounting System (OCAS)



## TEXAS CASE STUDY - HB 1 (2006)

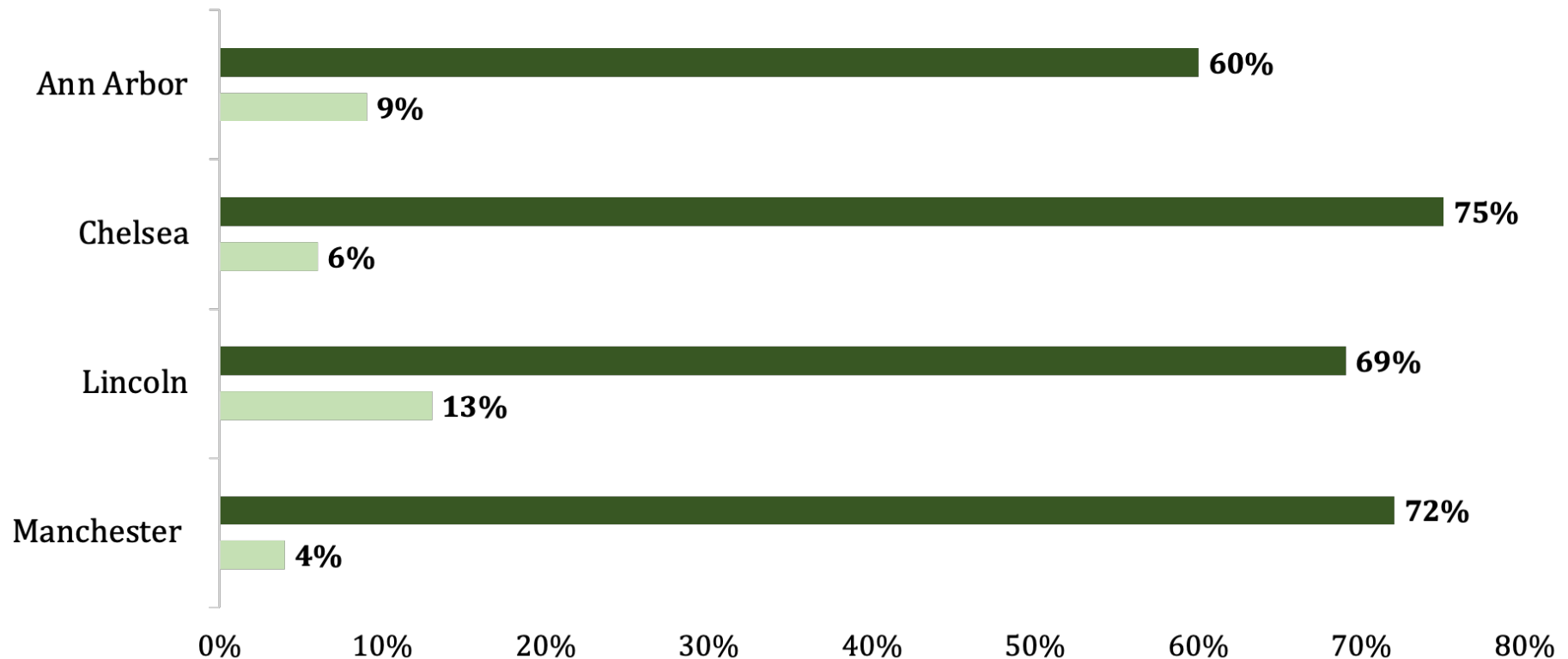
- 🔥 HB1 became law in 2006
- 🔥 174 school districts switched to on-cycle elections
- 🔥 Average effect of 16% increase in voter turnout for school board elections



# MICHIGAN CASE STUDY – HB 4005 (2012)

## Michigan Voter Participation in School Board Elections after Aligning School Board Elections

■ 2012 ■ 2008



# MICHIGAN CASE STUDY – HB 4005 (2012)

**Chelsea School Board**

2008	2012	Voter Turnout Percent Increase	Voter Turnout Increase	% of Registered Voters Voting in School Board Election (2012)
797	9,562	1100%	8,765	75%

Source: Bradley Ward, Ph.D. analysis based on data from Washtenaw County

**Ann Arbor School Board**

2008	2012	Voter Turnout Percent Increase	Voter Turnout Increase	% of Registered Voters Voting in School Board Election (2012)
11,470	84,199	634%	72,729	60%

Source: Bradley Ward, Ph.D. analysis based on data from Washtenaw County

**Lincoln School Board**

2008	2012	Voter Turnout Percent Increase	Voter Turnout Increase	% of Registered Voters Voting in School Board Election (2012)
2,822	13,255	370%	10,433	69%

Source: Bradley Ward, Ph.D. analysis based on data from Washtenaw County

**Manchester School Board**

2008	2012	Voter Turnout Percent Increase	Voter Turnout Increase	% of Registered Voters Voting in School Board Election (2012)
247	4,271	1629%	4,024	72%

Source: Bradley Ward, Ph.D. analysis based on data from Washtenaw County

# ADVANTAGES OF ALIGNING SCHOOL BOARD ELECTIONS

- 🗳️ **Increased Voter Turnout**
- 🗳️ **Cost Efficiency**
- 🗳️ **Consistency in Election Administration**
- 🗳️ **Increased Accountability**

